

# Ficha Técnica

## Linha Design

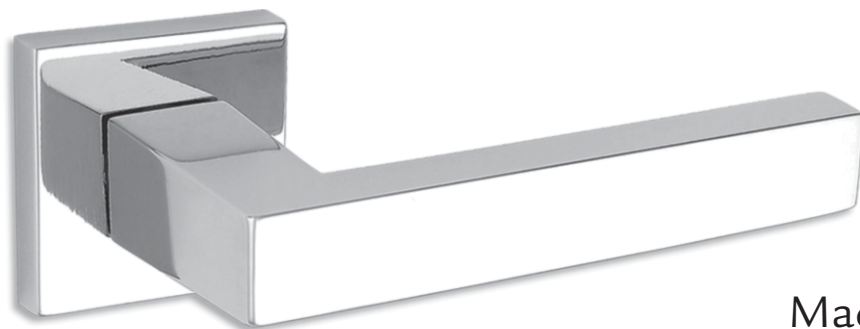
### Victoria - M109

Maçaneta: em Zamac

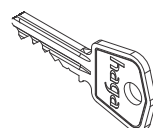
Broca: 40 e 55mm

Roseta: em Zamac

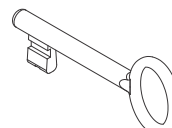
Testa e Contra Testa: material usado de acordo com o acabamento



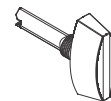
#### Aplicação



Ext.



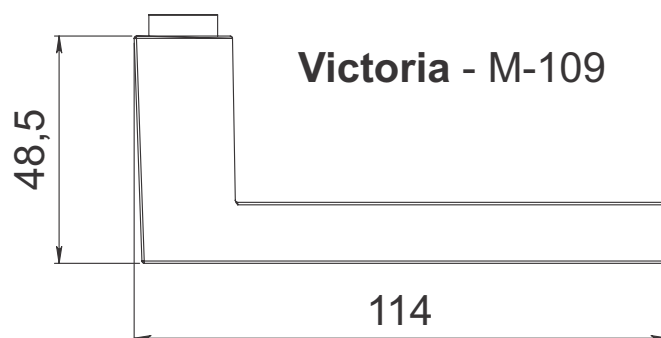
Int.



WC



#### Maçaneta:



#### Acabamentos:



Cr  
Cromado



CrA  
Cromo  
Acetinado

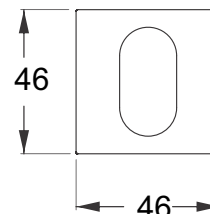


ANT  
Antique

#### Rosetas:



R. 524



**haga** | 80+



mais presente - mais futuro - mais seguro

